

# WILLIAMSON COUNTY HOUSING STATISTICS



Week of: **1/22/2012**

# Homes Sold	SqFt	\$/SF	List Price	Sold Price	% Difference	Days on Market	
<b>48</b>	Average	2,052	\$ 86.72	\$ 194,946	\$ 187,421	96.82%	70
	Median	1,863	\$ 80.51	\$ 152,950	\$ 154,400	97.22%	55
	High	4,146	\$ 184.21	\$ 749,900	\$ 700,000	106.12%	280
	Low	1,000	\$ 26.00	\$ 24,500	\$ 26,000	82.47%	0
	\$ Volume						\$8,996,217

Week of: **1/15/2012**

# Homes Sold	SqFt	\$/SF	List Price	Sold Price	% Difference	Days on Market	
<b>62</b>	Average	2,103	\$ 86.94	\$ 195,511	\$ 188,627	96.59%	80
	Median	1,981	\$ 81.24	\$ 159,950	\$ 155,600	96.94%	69
	High	4,863	\$ 153.38	\$ 734,950	\$ 677,000	106.54%	273
	Low	1,150	\$ 47.19	\$ 68,900	\$ 63,900	76.19%	2
	\$ Volume						\$11,694,852

Week of: **1/8/2012**

# Homes Sold	SqFt	\$/SF	List Price	Sold Price	% Difference	Days on Market	
<b>79</b>	Average	2,156	\$ 86.82	\$ 196,040	\$ 189,748	97.07%	76
	Median	1,919	\$ 87.26	\$ 175,000	\$ 170,000	96.94%	57
	High	4,373	\$ 146.21	\$ 669,900	\$ 636,000	106.86%	384
	Low	915	\$ 40.74	\$ 61,000	\$ 65,007	82.02%	2
	\$ Volume						\$14,990,080

Week of: **1/1/2012**

# Homes Sold	SqFt	\$/SF	List Price	Sold Price	% Difference	Days on Market	
<b>59</b>	Average	2,267	\$ 86.19	\$ 207,267	\$ 201,690	97.81%	83
	Median	2,095	\$ 85.90	\$ 176,500	\$ 176,500	98.15%	70
	High	5,475	\$ 200.55	\$ 1,200,000	\$ 1,098,000	112.50%	371
	Low	1,107	\$ 41.02	\$ 61,600	\$ 58,777	82.61%	2
	\$ Volume						\$11,899,681

Week of: **12/25/2011**

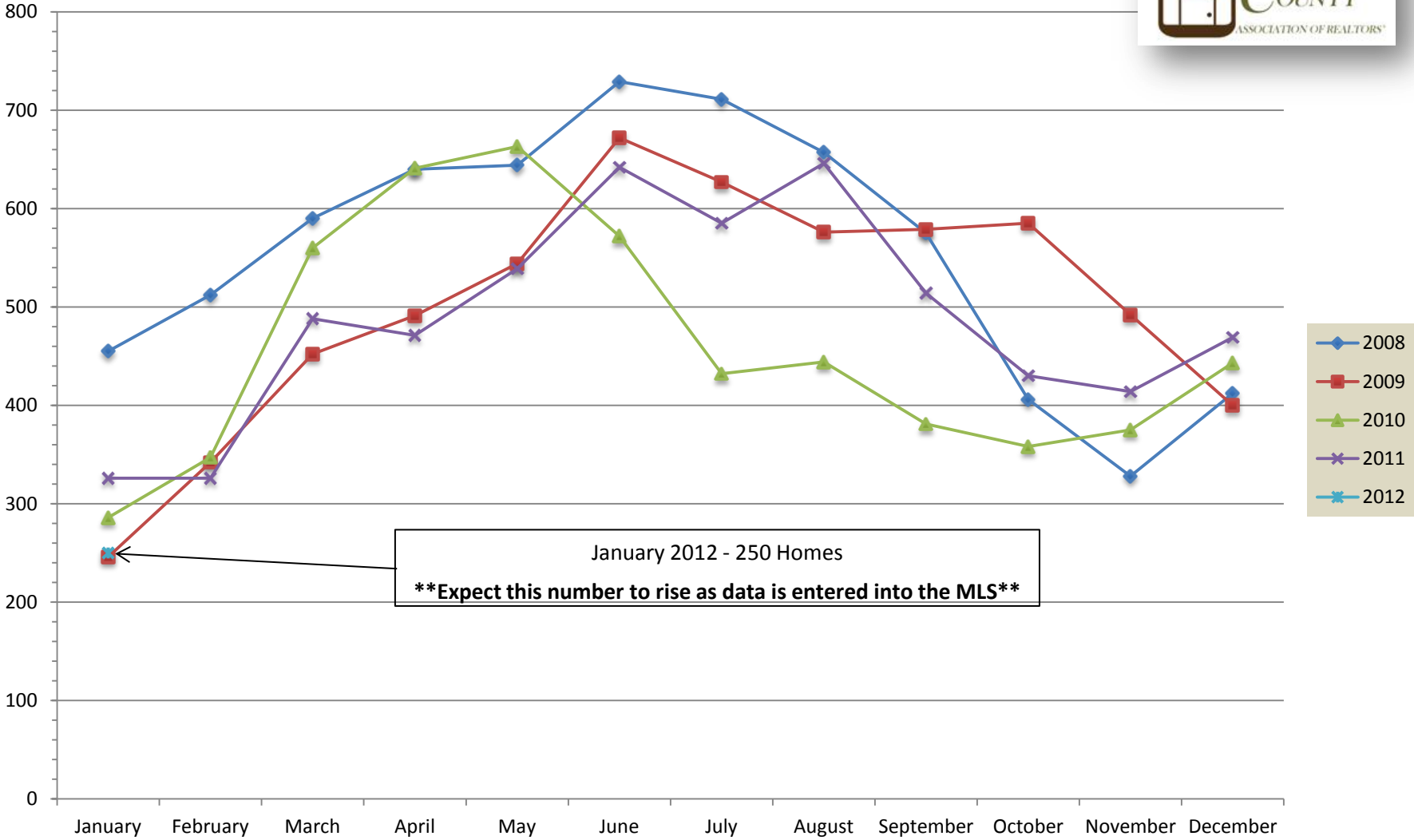
# Homes Sold	SqFt	\$/SF	List Price	Sold Price	% Difference	Days on Market	
<b>123</b>	Average	2,259	\$ 88.65	\$ 208,088	\$ 200,650	96.84%	88
	Median	2,185	\$ 87.20	\$ 186,070	\$ 182,500	97.55%	55
	High	4,434	\$ 214.22	\$ 525,000	\$ 500,000	117.15%	465
	Low	1,048	\$ 15.83	\$ 44,900	\$ 38,500	83.88%	0
	\$ Volume						\$24,680,010

Week of: **12/18/2011**

# Homes Sold	SqFt	\$/SF	List Price	Sold Price	% Difference	Days on Market	
<b>107</b>	Average	2,268	\$ 87.17	\$ 207,114	\$ 199,819	95.95%	92
	Median	2,168	\$ 86.72	\$ 189,900	\$ 188,000	97.03%	70
	High	4,361	\$ 156.51	\$ 498,500	\$ 547,500	109.83%	511
	Low	931	\$ 19.04	\$ 55,000	\$ 45,000	77.01%	0
	\$ Volume						\$21,380,635



# # of Homes Sold in Williamson County 2008 - 2012



January 2012 - 250 Homes  
**\*\*Expect this number to rise as data is entered into the MLS\*\***